



# ELISAH

European Linkage of Initiative  
from Science to Action in Health

---

Corporate identity manual

# Brand style guide

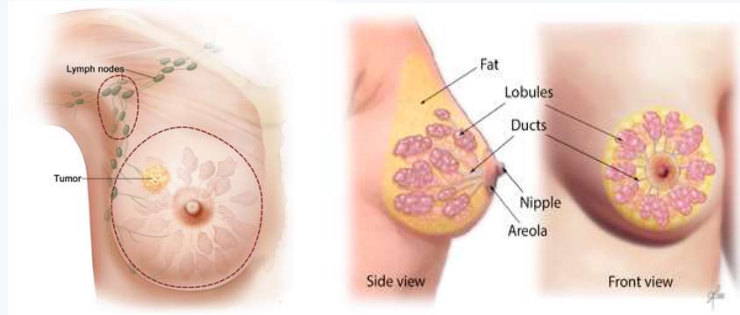
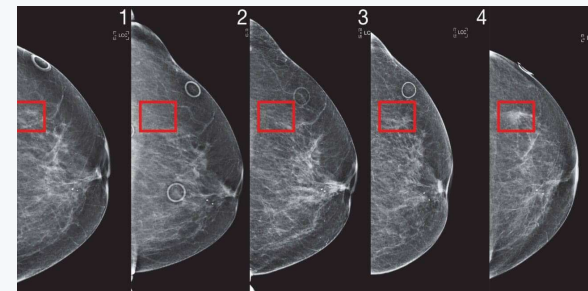
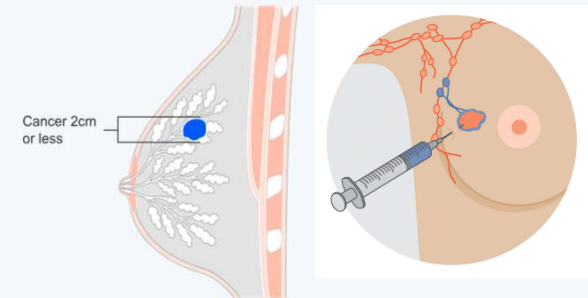
---

Inspiration wall	3
Visual identity	4
Logo	5
Logo elements	7
Logo creation	8
Logo design	10
Logo colors	11
Typology fonts	12
Typology colors	13



# Inspiration wall

→ Brainstorm by looking at different images of the female breast...



# Visual identity

ELISAH is the acronym for "European Linkage of Initiative from Science to Action in Health".

The ELISAH project aims to reduce the burden of breast cancer by acting on modifiable risk factors and involving NGOs and patient groups.

The central theme is the **woman's breast**, so to create the logo we were inspired by a breast. The different proposals followed this idea.

The visual identity of ELISAH was defined by voting among the project team members. Of the 3 proposals presented, 2 were tied, so we chose to merge everything into one.



# LOGO

left position



Both versions with the graphic in the left or right position are correct.

right position



# LOGO



Original logo



Black contrast logo



# LOGO elements

## LOGO



The written word Elisah corresponds to the Arkitech Bold font and the rest are Sansation Light fonts, both with a 12% inclination to give it more dynamism.

## ISOTYPE



The isotype is the graphic part of the logo and is inspired by the female breast. The different points represent the structures of the breast. It has a vertical gradient from black to red



# LOGO creation

LEFT



RIGHT



The logo is designed using the golden ratio. This provides the best position between logo and graphic.





# LOGO design

HORIZONTAL LOGO: for large sizes



HORIZONTAL LOGO: for small sizes



With added text



No added text

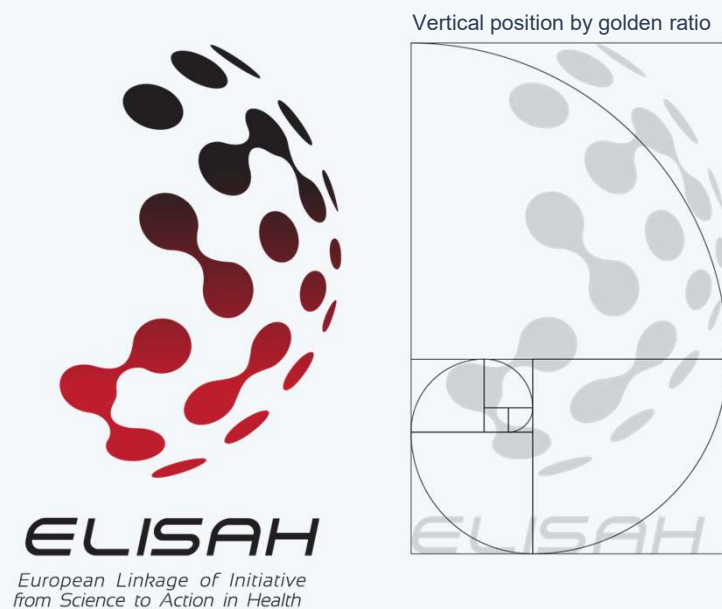


Minimum size  
Always without text



# LOGO design

VERTICAL LOGO: for large sizes



VERTICAL LOGO: for small sizes



Minimum size  
Text added



Minimum size  
No text added

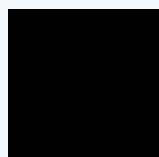


Apps version



# LOGO colors

## MAIN COLORS



BLACK  
#000000  
RGB= 0,0,0



RED  
#be1e2d  
RGB= 190,30,45



DEGRADED  
#000000 + #be1e2d  
RGB= 0,0,0 + 190,30,45

## ADDITIONAL COLOR



BLUE  
#19417d  
RGB= 25,65,125



# TYPOLOGY fonts

The fonts of ELISAH (free to use) are Bahnschrift SemiCondensed for the titles and Tahoma for the paragraphs. Calibri cursive for other text elements as caption (figure 5). The three of them belong to sans serif typefaces families. These fonts are part of the basic package of all computers, so there will be no problem in using these fonts.

**Bahnschrift SemiCondensed**  
+ Bold Font  
Titles

**Lorem ipsum dolor sit amet**  
**LOREM IPSUM DOLOR SIT AMET**

**Tahoma**  
Paragraphs

Lorem ipsum dolor sit amet  
LOREM IPSUM DOLOR SIT AMET

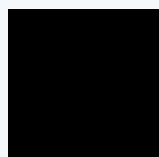
**Calibri cursive**  
caption

*Lorem ipsum dolor sit amet*  
*LOREM IPSUM DOLOR SIT AMET*



# TYPOLOGY colors

## TITLES



BLACK  
#000000  
RGB= 0,0,0



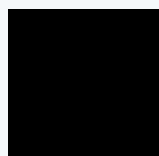
RED  
#be1e2d  
RGB= 190,30,45

## ADDITIONAL COLOR



BLUE  
#19417d  
RGB= 25,65,125

## PARAGRAPHS



BLACK  
#000000  
RGB= 0,0,0



GREY  
#283c50  
RGB= 40,60,80



LAVENDER  
#c37da0  
RGB= 195,125,160



# Corporate identity manual



**ELISAH**

*European Linkage of Initiative  
from Science to Action in Health*

---

Corporate identity manual